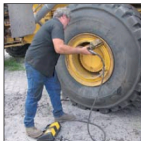


▼ Shown: XA11G



- Ergonomic design for less operator fatigue
- Variable oil flow and fine metering for precise control
- Higher oil flow for increased productivity
- Closed hydraulic system prevents contamination and allows pump usage in any position
- Pedal lock function for retract position
- Ground screw for improved ATEX explosion safety
- External adjustable pressure setting valve

▼ Easily operated by foot. No need to fully lift up foot - rest body weight on heel, resulting in a hands-free and stable working position.



XVARI[®] TECHNOLOGY

Productivity and Ergonomics



Optional Pressure Gauge

Integrated gauge with calibrated scale reading in psi, bar and MPa for actual pressure reading.



Optional 4-Way 3-Position Valve

For powering double-acting hydraulic cylinders and tools.



Optional 1/2 Gallon Reservoir

Double oil capacity for powering larger hydraulic cylinders and tools.



Pedal Safety Guard

Customer installed frame protects both pedals against accidental activation.

Order model number ¹⁾

XPG1



¹⁾Joy-stick[®] Lever Kit

Customer installed set of handles for manual operation of both pedals.

Order model number ¹⁾

XLK1



Hydraulic Swivel Connector

Customer installed swivel connector for optimal orientation of the hydraulic hose.

Order model number ¹⁾

XSC1

¹⁾Accessories must be ordered separately.

XVARI® Technology, Air Driven Hydraulic Pumps



XVARI® TECHNOLOGY

Production Application

XA11 pump is used with a 13-ton hollow cylinder to compress and position diesel engine valve springs.

The operator benefits from the fine metering capacities of the XVARI® Technology to apply the mandatory precise stroke and force.

www.xvari.com

XA Series



Reservoir Capacity:
61-122 in³

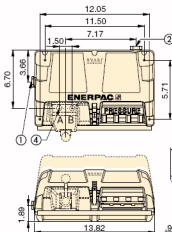
Flow at Rated Pressure:
15 in³/min.

Air Consumption:
10-35 scfm

Maximum Operating Pressure:
10,000 psi

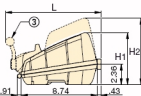
▼ XA-SERIES PERFORMANCE CHART

Maximum Pressure (psi)	Output Flow Rate (in ³ /min)		Pump Series	Valve Function	Dynamic Air Pressure (psi)
	No load	Load			
10,000	120	15	XA1	Advance/Hold/Retract	30-125



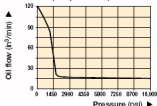
- ① 3/8"-18 NPTF Oil Outlet
- ② 1/4"-18NPTF Air Inlet
- ③ 4/3 Optional Control Valve
- ④ 3/8"-18 NPTF Oil Outlet

Dimensions shown in inches.



OIL FLOW vs. PRESSURE

at 100 psi dynamic air pressure



Regulator-Filter-Lubricator

Recommended for use with all XA-Series Air pumps. Provides clean, lubricated air and allows for air

pressure adjustment.

Order model number ⁴⁾ **RFL102**

▼ SELECTION CHART

For Use With Cylinder Tool	Usable Oil Capacity (in ³)	Model No. ¹⁾	Pressure Gauge	3-Way, 3-Position Valve	4-Way, 3-Position Valve	Dimensions (in)			Weight (lbs)
						H1	H2	L	
Single-acting	61	XA11	-	•	-	5.98	-	-	19.0
	122	XA12	-	•	-	-	6.69	-	22.4
Single-acting	61	XA11G	•	•	-	5.98	-	-	19.4
	122	XA12G	•	•	-	-	6.69	-	22.9
Double-acting	61	XA11V	-	-	•	5.98	-	10.98	22.3
	122	XA12V	-	-	•	-	6.69	10.98	25.7
Double-acting	61	XA11VG	•	-	•	5.98	-	10.98	22.7
	122	XA12VG	•	-	•	-	6.69	10.98	26.2

⁴⁾High-flow coupler CR400 and accessories must be ordered separately.